



RIVERDALE

WESTBROOK COUNTRY ESTATE

HOMES OF
DISTINCTION

PHASE 2 - LAUNCHING NOV 2023

WESTBROOK
COUNTRY ESTATE

FOR VIEWINGS CONTACT

 041 001 0090

sales@westbrooklife.co.za | www.westbrooklife.co.za

 **amdec group**
inspiring tomorrow's lifestyles

PHASE 2

NOW LAUNCHING

RIVERDALE

WESTBROOK COUNTRY ESTATE

24 FREE-STANDING HOMES

SIMPLEX

3 BEDS • 2 BATH • DOUBLE GARAGE • COVERED PATIO

FROM R1.8MILLION

DUPLEX

3 & 4 BEDS • 2 BATH • DOUBLE GARAGE • COVERED PATIO

FROM R1.7MILLION

Communal park | Picnic area | Children's playground | Access control | Security gatehouse
Precinct CCTV | Perimeter fence

Selling price includes VAT, transfer duty, bond costs and conveyancing fees

WESTBROOK
COUNTRY ESTATE

FOR VIEWINGS CONTACT

 **041 001 0090**

sales@westbrooklife.co.za | www.westbrooklife.co.za

 **amdec group**
inspiring tomorrow's lifestyles

A PROFESSIONALLY MANAGED
LIFESTYLE ESTATE



The Amdec Group is proud to introduce the next phase of River Dale, the second of nine residential villages at Westbrook Country Estate, Gqeberha's most iconic lifestyle estate.

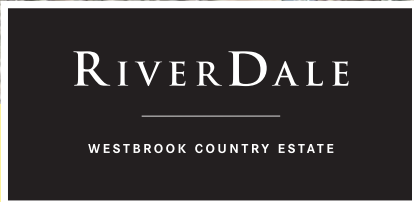
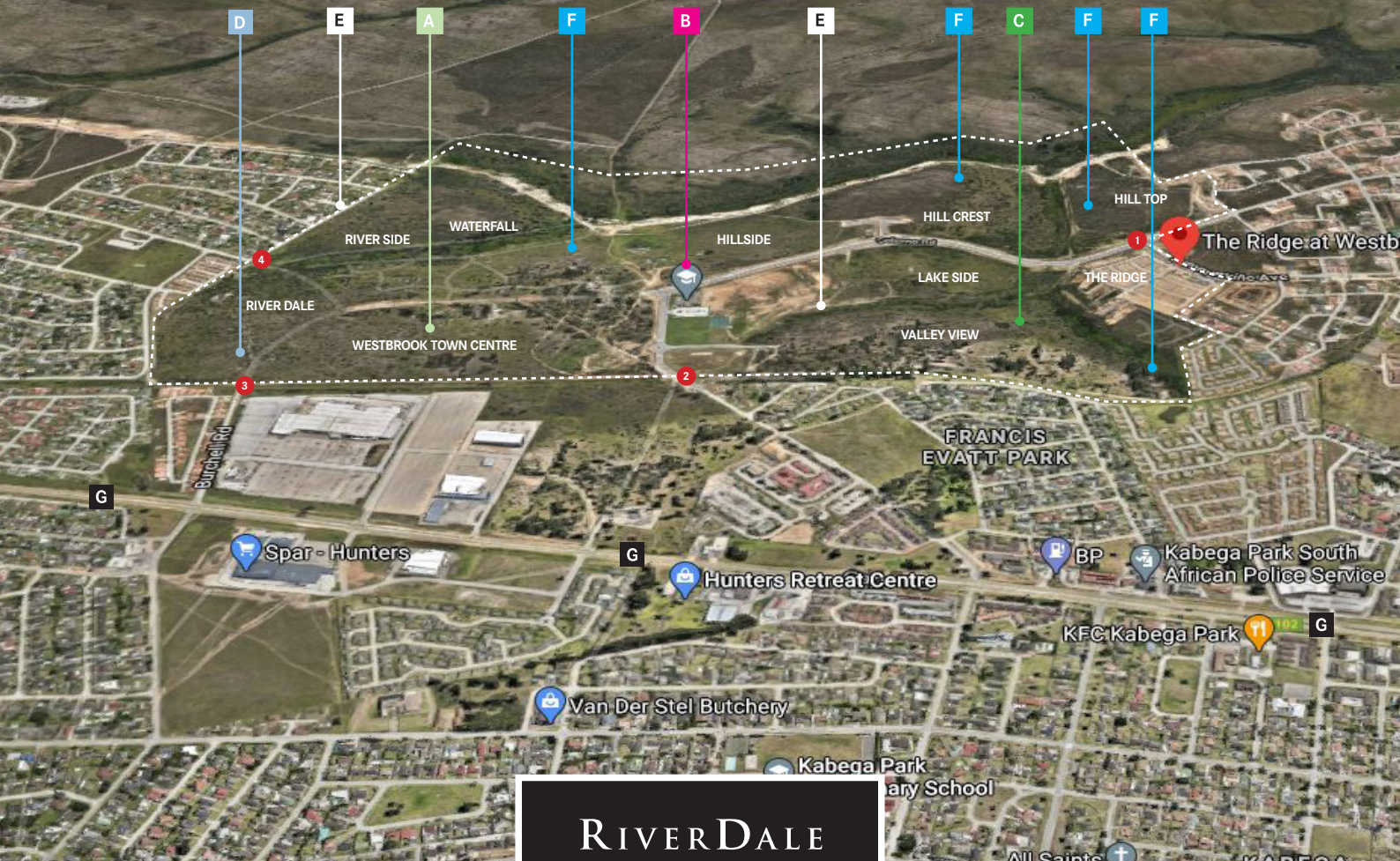
The beautifully appointed homes at River Dale combine timeless elegance, spacious living, modern styling, and 21st century convenience. Meticulous attention to detail is evident throughout, with a range of signature features and finishes on offer, both indoors and out.

Westbrook Country Estate occupies 128 hectares of lush parkland and wide-open space. The completed development will comprise of nine residential estates, a bustling town centre with shops, restaurants, offices, and health clubs, a Curro private school, and an Evergreen Retirement village.

RIVERDALE

WESTBROOK COUNTRY ESTATE

DISCOVER YOUR NEW NEIGHBOURHOOD



POINTS OF INTEREST

- A** Town Centre
- B** Curro Westbrook
- C** Evergreen Retirement Village
- D** Sales Office

- E** Cycling and running path
- F** Picnic areas
- G** Old Cape Road
- Entrances

DISTANCE

- 11km to Gqeberha CBD
- 8.6km to Bay West Mall
- 17km to Beach
- 2km to SAPS
- 16km to Gqeberha International Airport

GPS CO-ORDINATES 33.9313° S, 25.5005° E

WESTBROOK SITE DEVELOPMENT PLAN



RIVERDALE

WESTBROOK COUNTRY ESTATE

WESTBROOK
COUNTRY ESTATE

FOR VIEWINGS CONTACT

041 001 0090

sales@westbrooklife.co.za | www.westbrooklife.co.za

amdec group
inspiring tomorrow's lifestyles

EXTERIOR VIEWS



RIVERDALE

WESTBROOK COUNTRY ESTATE

WESTBROOK
COUNTRY ESTATE

FOR VIEWINGS CONTACT

041 001 0090

sales@westbrooklife.co.za | www.westbrooklife.co.za

amdec group
inspiring tomorrow's lifestyles

INTERIOR VIEWS



RIVERDALE

WESTBROOK COUNTRY ESTATE

WESTBROOK
COUNTRY ESTATE

FOR VIEWINGS CONTACT

041 001 0090

sales@westbrooklife.co.za | www.westbrooklife.co.za

amdec group
inspiring tomorrow's lifestyles

RIVER DALE

AVAILABLE UNITS

Unit Pricing

| | |
|----------|-------------|
| 44 | SOLD |
| 8 | R 1,700 000 |
| 8 | R 1,800 000 |
| 2 | R 1,850 000 |
| 1 | R 1,900 000 |
| 5 | R 2,000 000 |
| 24 Total | |



RIVERDALE

WESTBROOK COUNTRY ESTATE

WESTBROOK
COUNTRY ESTATE

FOR VIEWINGS CONTACT

041 001 0090

sales@westbrooklife.co.za | www.westbrooklife.co.za

amdec group
inspiring tomorrow's lifestyles

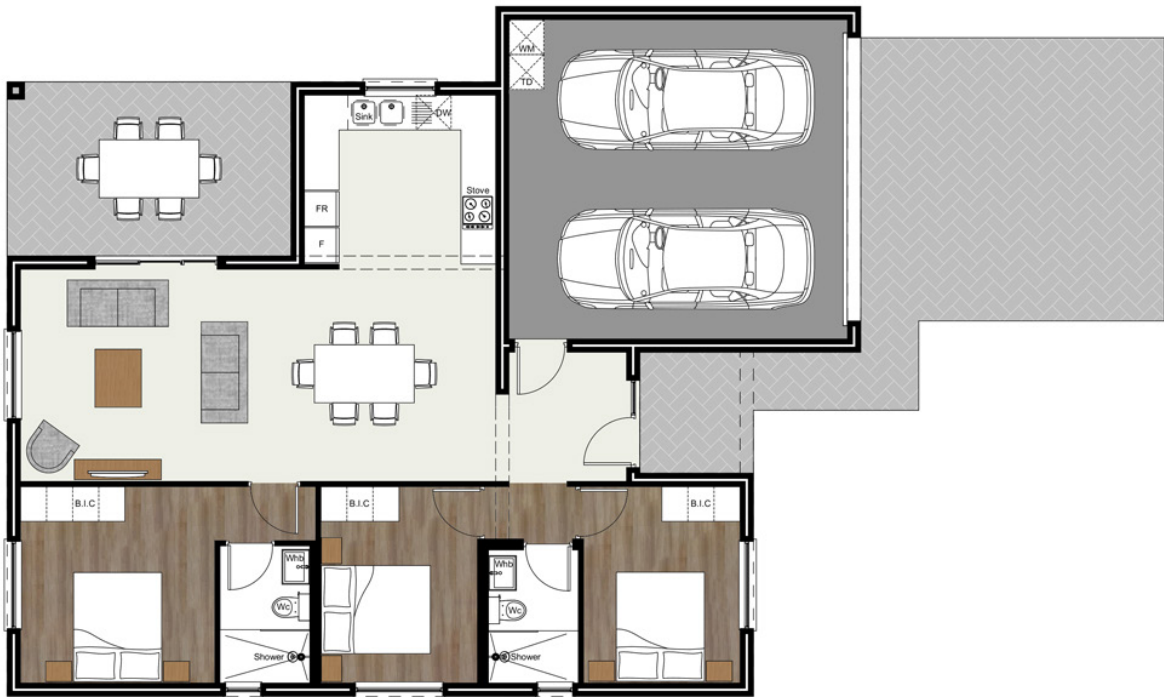
RIVER DALE

PLAN TYPE A

SIMPLEX

BEDROOM : 3
BATHROOM : 2
GARAGE : DOUBLE
SIZE : 155m²

from **R1.8 million**



RIVERDALE

WESTBROOK COUNTRY ESTATE

RIVER DALE

PLAN TYPE B

SIMPLEX

BEDROOM : 3
BATHROOM : 2
GARAGE : DOUBLE
SIZE : 153m²

from **R1.8 million**



RIVERDALE

WESTBROOK COUNTRY ESTATE

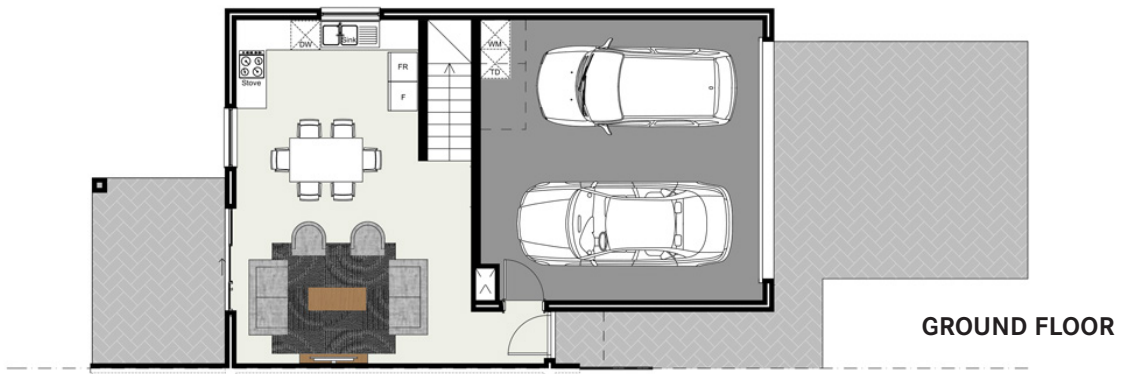
RIVER DALE

PLAN TYPE C

DUPLEX

BEDROOM : 3
BATHROOM : 2
GARAGE : DOUBLE
SIZE : 167m²

from **R1.7 million**



RIVERDALE

WESTBROOK COUNTRY ESTATE

RIVER DALE

PLAN TYPE C1

DUPLEX

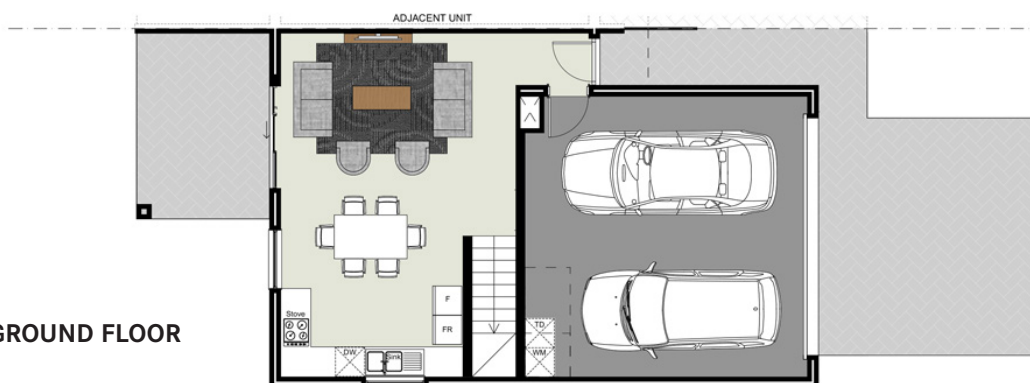
BEDROOM : 4
BATHROOM : 2
GARAGE : DOUBLE
SIZE : 167m²

from **R1.7 million**

FIRST FLOOR



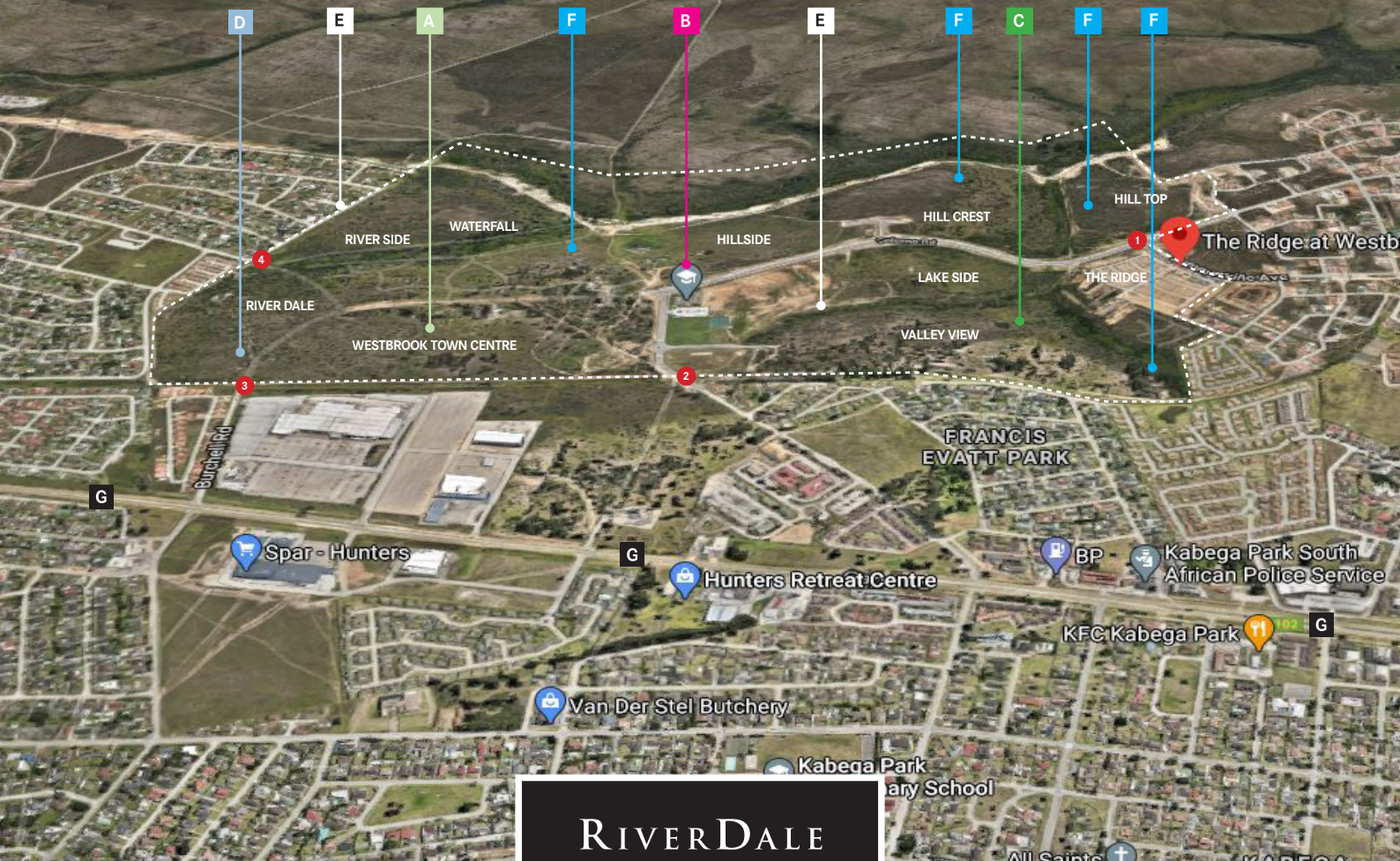
GROUND FLOOR



RIVERDALE

WESTBROOK COUNTRY ESTATE

DISCOVER YOUR NEW NEIGHBOURHOOD



POINTS OF INTEREST

- A** Town Centre
- B** Curro Westbrook
- C** Evergreen Retirement Village
- D** Sales Office

- E** Cycling and running path
- F** Picnic areas
- G** Old Cape Road
- Entrances

DISTANCE

- 11km to Gqeberha CBD
- 8.6km to Bay West Mall
- 17km to Beach
- 2km to SAPS
- 16km to Gqeberha International Airport

GPS CO-ORDINATES 33.9313° S, 25.5005° E