



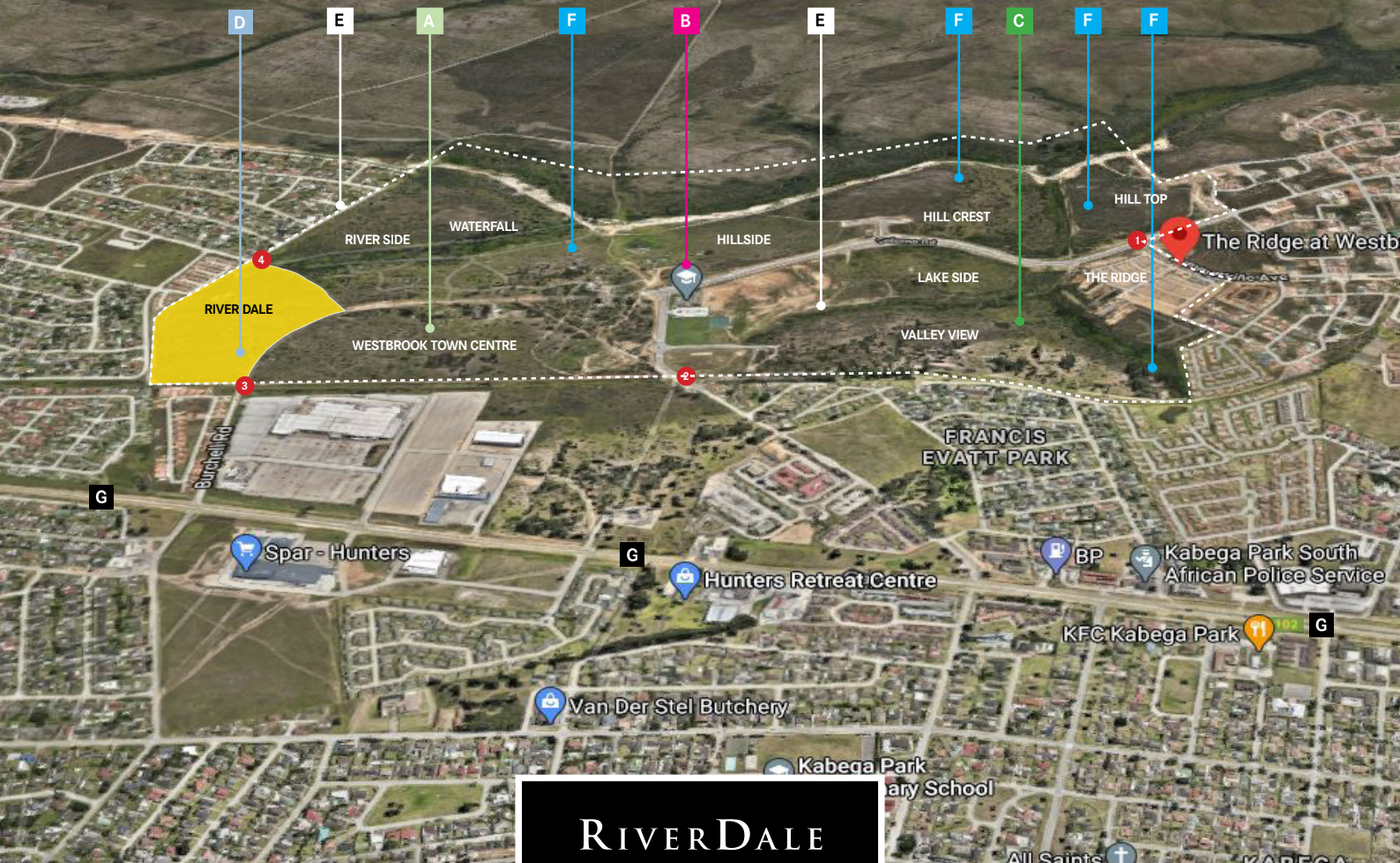
RIVERDALE
WESTBROOK COUNTRY ESTATE

The Amdec Group is proud to introduce the next phase of River Dale, the second of nine residential villages at Westbrook Country Estate, Gqeberha's most iconic lifestyle estate.

The beautifully appointed homes at River Dale combine timeless elegance, spacious living, modern styling, and 21st century convenience. Meticulous attention to detail is evident throughout, with a range of signature features and finishes on offer, both indoors and out.

PHASE 2 - NOW SELLING

DISCOVER YOUR NEW NEIGHBOURHOOD



RIVERDALE
WESTBROOK COUNTRY ESTATE

POINTS OF INTEREST

- A** Town Centre
- B** Curro Westbrook
- C** Evergreen Retirement Village
- D** Sales Office

- E** Cycling and running path
- F** Picnic areas
- G** Old Cape Road
- Entrances

DISTANCE

- 11km to Gqeberha CBD
- 8.6km to Bay West Mall
- 17km to Beach
- 2km to SAPS
- 16km to Gqeberha International Airport

GPS CO-ORDINATES 33.9313° S, 25.5005° E

RIVER DALE

SITE DEVELOPMENT PLAN



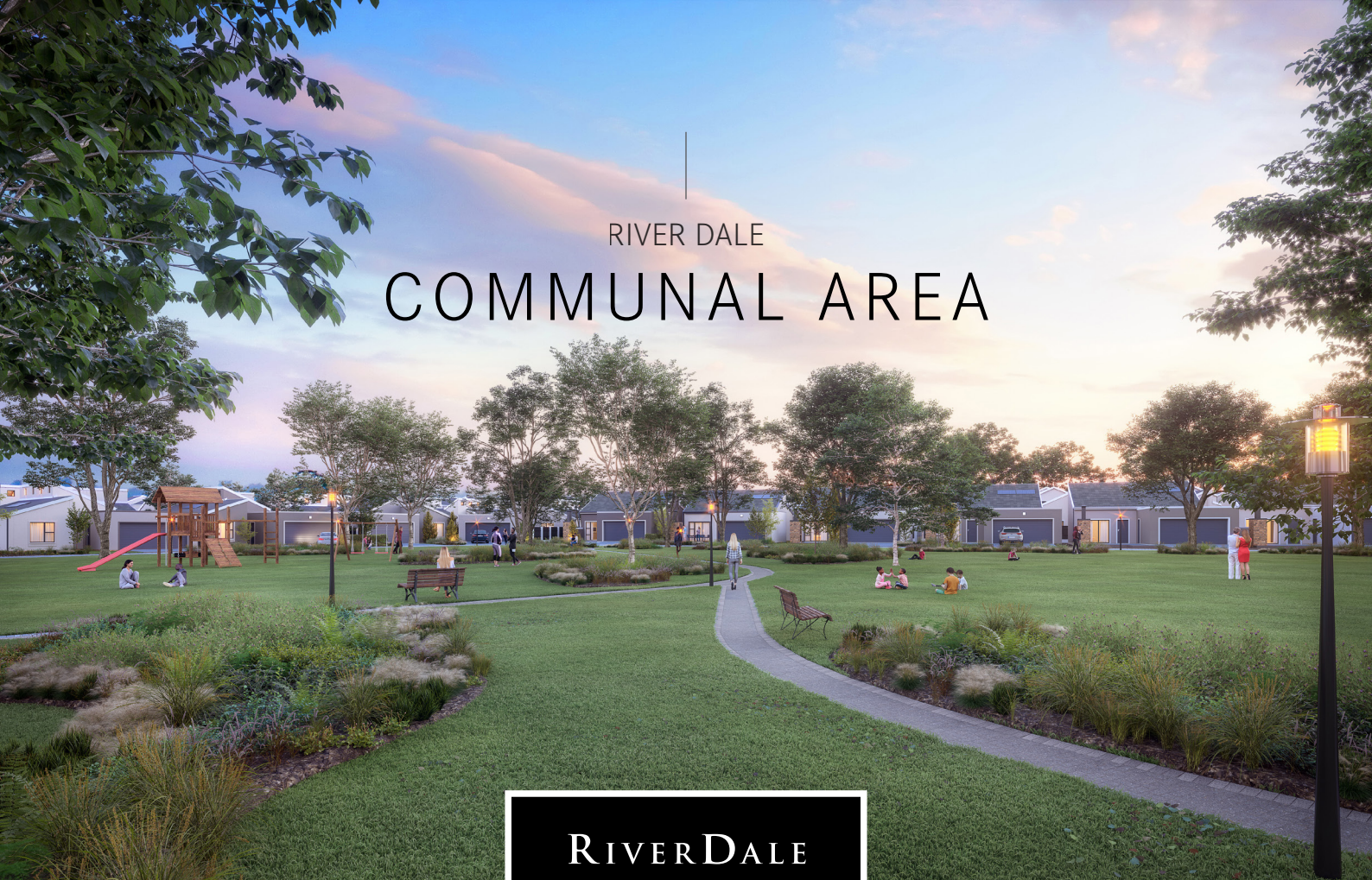
RIVERDALE
WESTBROOK COUNTRY ESTATE

WESTBROOK
COUNTRY ESTATE

FOR VIEWINGS CONTACT OUR SALES OFFICE
☎ 041 001 0090 ☎ 063 752 7999
sales@westbrooklife.co.za | www.westbrooklife.co.za

amdec group
Inspiring tomorrow's lifestyles

RIVER DALE
COMMUNAL AREA



RIVERDALE
WESTBROOK COUNTRY ESTATE



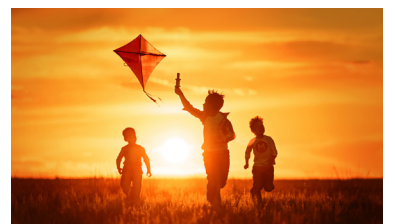
Adult pool



Kiddies splash pool



Open play area



RIVER DALE
PLAN TYPE A

SIMPLEX

BEDROOM : 3
BATHROOM : 2
GARAGE : DOUBLE
SIZE : 155m²

from **R1.675 million**



RIVER DALE

WESTBROOK COUNTRY ESTATE

UNIT TYPE A

EXTERIOR & INTERIOR VIEWS



RIVERDALE

WESTBROOK COUNTRY ESTATE

WESTBROOK
COUNTRY ESTATE

FOR VIEWINGS CONTACT OUR SALES OFFICE
📞 041 001 0090 📞 063 752 7999
sales@westbrooklife.co.za | www.westbrooklife.co.za

amdec group
inspiring tomorrow's lifestyles

RIVER DALE
PLAN TYPE B

SIMPLEX

BEDROOM : 3
BATHROOM : 2
GARAGE : DOUBLE
SIZE : 153m²

from **R1.675 million**



RIVERDALE

WESTBROOK COUNTRY ESTATE

UNIT TYPE B

EXTERIOR & INTERIOR VIEWS



RIVERDALE

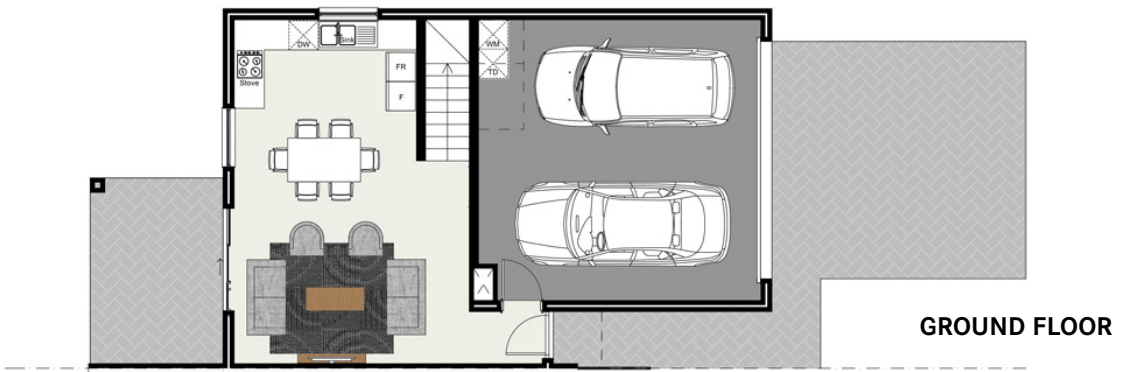
WESTBROOK COUNTRY ESTATE

RIVER DALE
PLAN TYPE C

DUPLEX

BEDROOM : 3
BATHROOM : 2
GARAGE : DOUBLE
SIZE : 167m²

from R1.7 million



RIVERDALE

WESTBROOK COUNTRY ESTATE

UNIT TYPE C

EXTERIOR & INTERIOR VIEWS



RIVERDALE

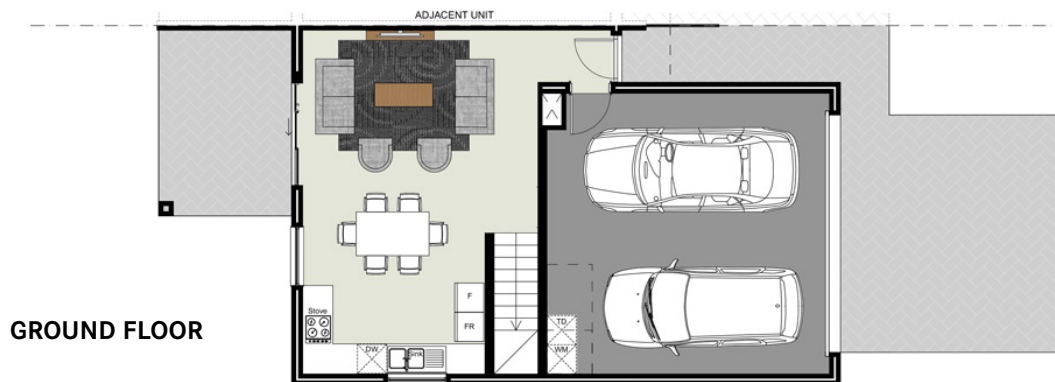
WESTBROOK COUNTRY ESTATE

RIVER DALE
PLAN TYPE C1

DUPLEX

BEDROOM : 4
BATHROOM : 2
GARAGE : DOUBLE
SIZE : 167m²

from R1.7 million



RIVERDALE

WESTBROOK COUNTRY ESTATE

UNIT TYPE C1

EXTERIOR & INTERIOR VIEWS



RIVERDALE

WESTBROOK COUNTRY ESTATE

HOMES OF DISTINCTION

WESTBROOK COUNTRY ESTATE

Westbrook occupies 128 hectares of lush parkland and wide-open space. The completed development will comprise nine residential estates, a bustling town centre with shops, restaurants, offices, and health clubs, a Curro Private school, and an Evergreen Retirement village.

Homes at Westbrook offers an unrivalled property asset and an excellent investment in Port Elizabeth's most iconic lifestyle estate. Distinctive design, superior craftsmanship, and meticulous attention to detail results in homes that reflect the art of luxury modern life.

Westbrook is privately owned and operated by the Amdec Group, the developer behind some of SA's most prestigious lifestyle estates. Here, you'll find a pristine, perfectly managed and immaculately maintained environment that delivers both occupational and financial peace of mind.



RIVERDALE

WESTBROOK COUNTRY ESTATE